

# Training and Development on Interdisciplinary Scientific Teams

---

Hannah Love

Jeni Cross

Susan VandeWoude

Kevin Crooks

Bailey Fosdick

Ellen Fisher



Colorado State University

# Exemplary Case Study

- 12 teams from the Catalyst for Innovative Partnership (CIP) Program
- 25 Pre-CIP Teams
- 1 CTSA
- 1 Team with 2 large NSF grants
- ★ Exemplary - unusual and of general interest to the public, the issues are naturally important, or both (Yin 2017)







12-Year Team



# Problem #1

---

“Teamwork is Hard”



# Types of Evaluation

- **Developmental Evaluation** –
  - Are specific roles being fulfilled?
  - Are tasks being completed?
- **Process Evaluation** –
  - How is the team communicating
  - Are they having regular meetings?
  - Is there collaboration and engagement?
- **Outcome Evaluation** –
  - Includes agreed upon milestones and stage gates such as like publications and grants.



# Problem #2

- 75% of studies use bibliometric data (Hall et. al. 2018)
  - In SciTS we know the most about successful teams that have published
  - Publications are a long-term outcome of a successful team
- Gaps in the literature about team process and development
- Gaps in the literature about teams who fail to publish





# Research Questions

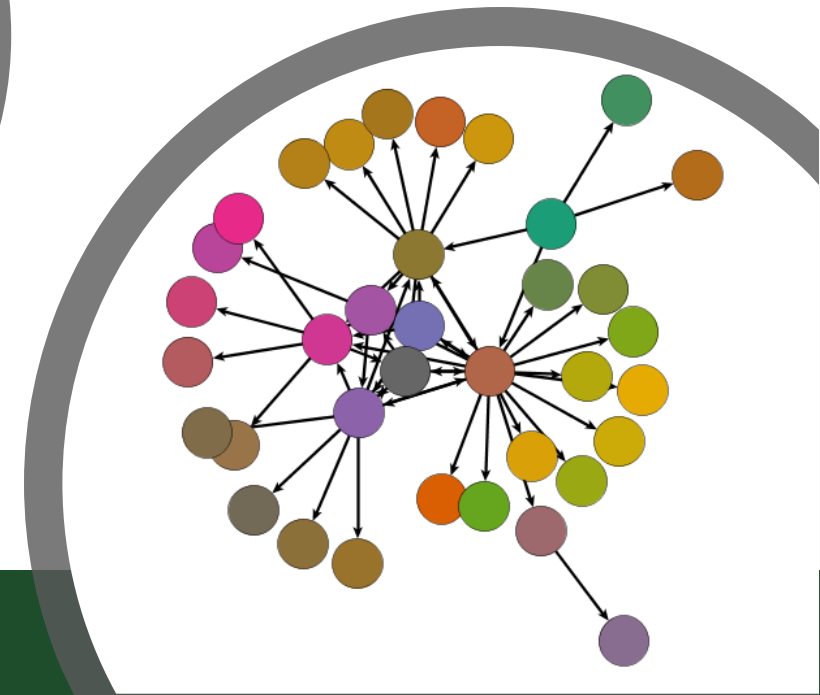
---

**How do scientists develop  
through participation in  
transdisciplinary teams?**



# Mixed-Methods

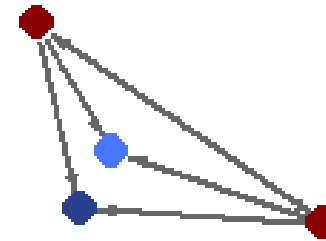
- 2015-Present
- Participant observation
- Interviews and focus groups
- Turn-taking Data collection
- Social network data
  - Collaboration diagrams are a combination of: grant, publications, and new research
  - Advice networks
  - Mentoring networks





2004

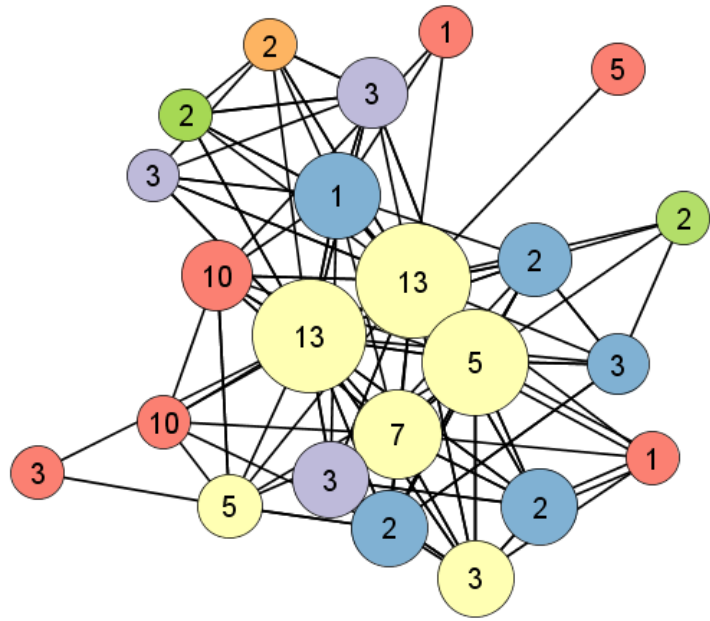
# Team History



- PI
- Postdoc
- Graduate
- Undergraduate
- Collaborator

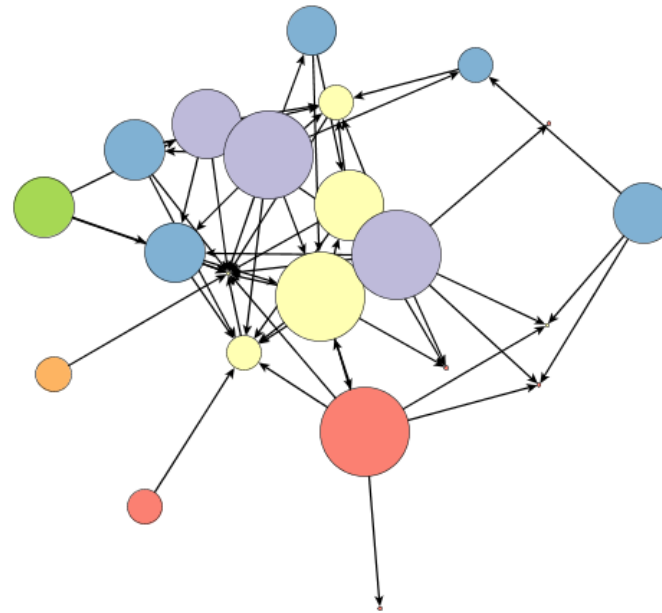
- Faculty
- PostDoc
- Graduate
- Undergraduate
- Collaborator
- Other

# 2016



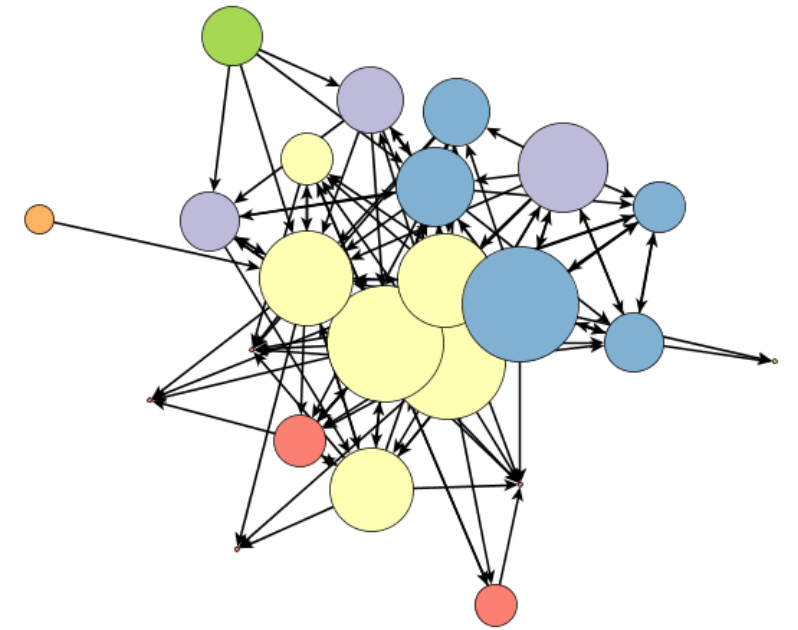
Scientific Collaboration

Average Degree 6.22



Mentor

Average Degree 2.4



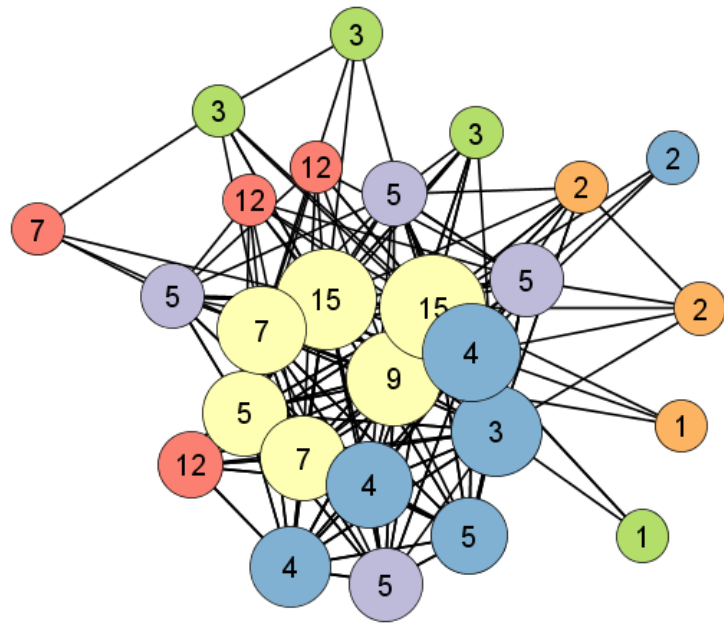
Advice

Average Degree 5.4



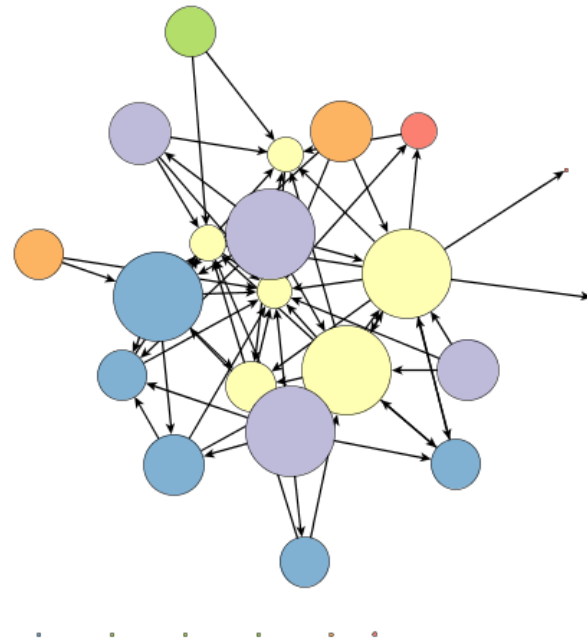
- Faculty
- PostDoc
- Graduate
- Undergraduate
- Collaborator
- Other

# 2018



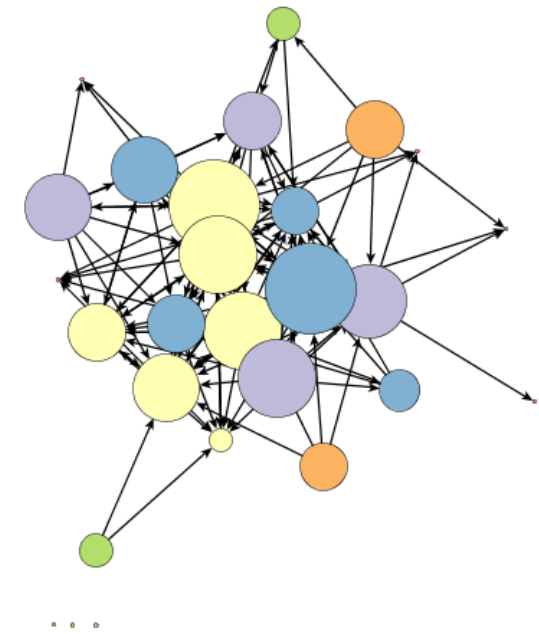
Scientific Collaboration

Average Degree 9.1



Mentor

Average Degree 2.5



Advice

Average Degree 5.1

# Collaborative Capacity - building internal and external relationship

- Mentoring
- Advice
- Scientific Collaboration  
Network





A top-down photograph of a group of people sitting on a green lawn. Their hands and feet are arranged in a circle, touching or near each other, symbolizing unity and teamwork. The image is partially obscured by a semi-transparent circular overlay on the left side.

# Personal Mastery

---

**A set of principles  
and practices  
necessary for team  
learning**

# Personal Mastery

---

**Male Postdoc:** I have learned a great deal about disease dynamics, which is not my background or regular field of study. I have also learned better communication skills from working with such a large and diverse group.

**Female Postdoc:** Communication would be a major avenue in which I have gained skills. Also how to be a good leader and understand how to manage different personalities.



# On the Ground Training

**The team's routine interactions helped members develop both personal mastery and build collaborative capacity.**



# Correlation of Mentor and Advice Networks to Scientific Collaboration Network

	QAP Mentor to Collaboration		QAP Advice to Collaboration	
	<u>Pearson Correlation</u>	<u>P-Value</u>	<u>Pearson Correlation</u>	<u>P-Value</u>
2015	0.21	0.0020	0.29	0.0008
2016	0.93	0.0002	0.72	0.0002
2017	0.59	0.0002	0.57	0.0002
2018	0.86	0.0002	0.85	0.0002

What we learned....



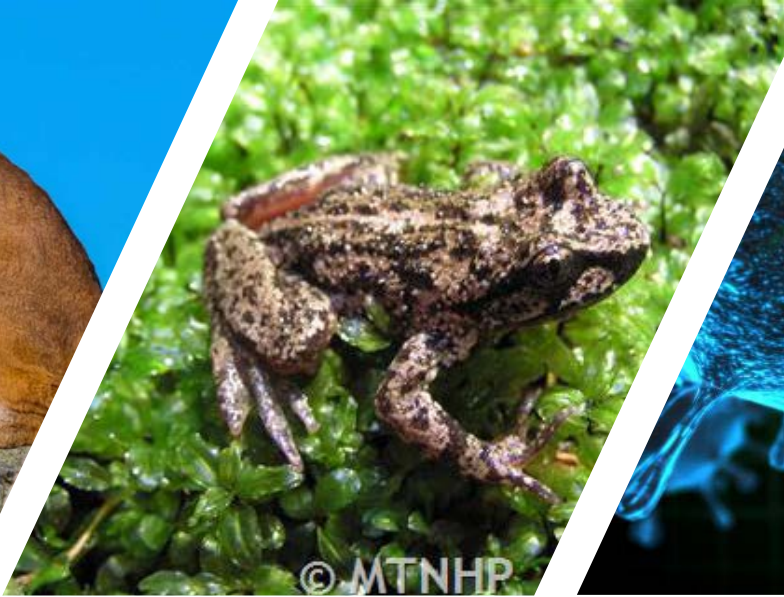
Historically....





# Single Investigator Problems...





To Solve  
Complex  
Problems....

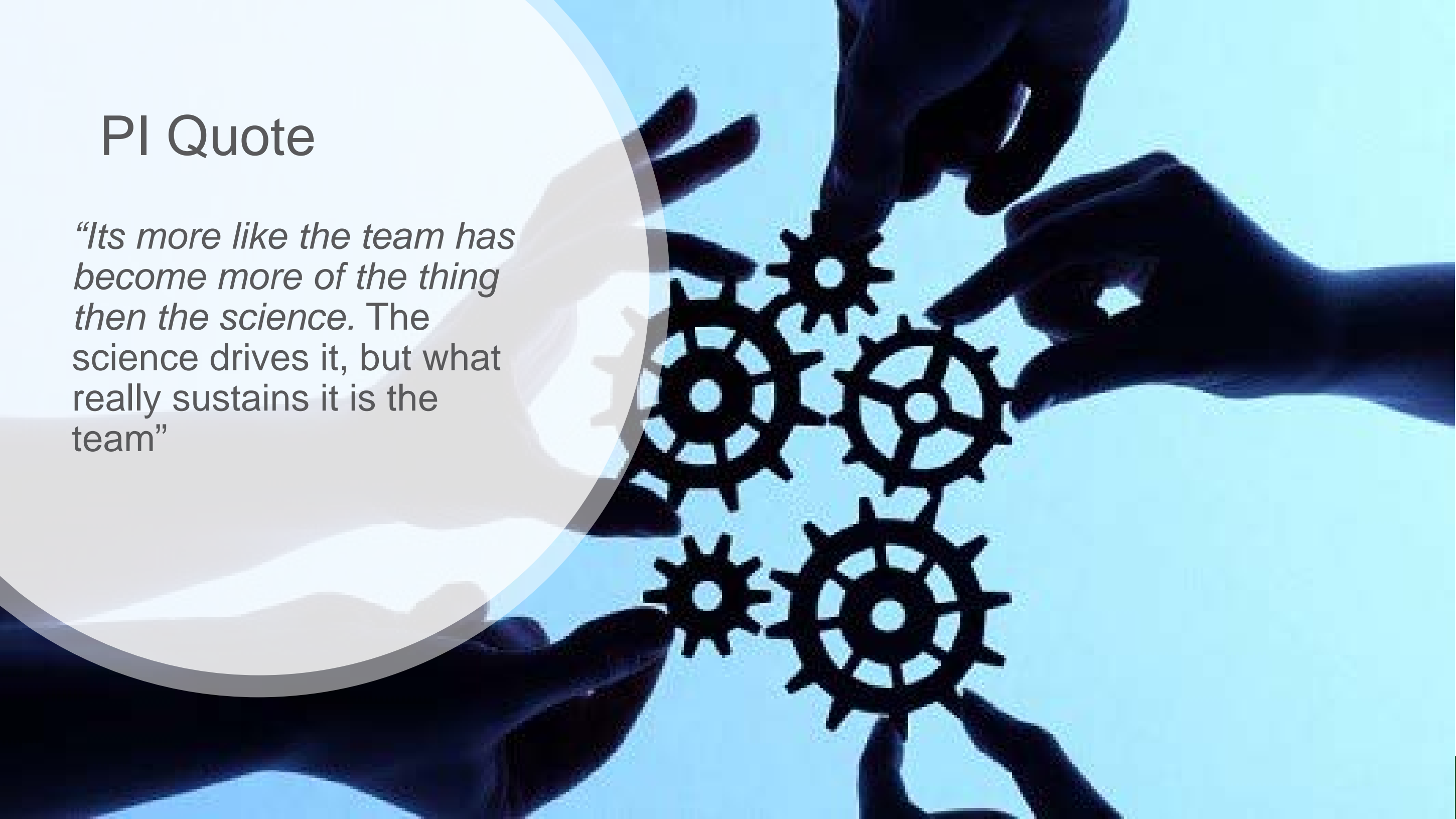




**New knowledge is created through  
building relationships.**

# PI Quote

*“Its more like the team has become more of the thing than the science. The science drives it, but what really sustains it is the team”*



## Recommendations and Future Directions: Conflict

“It’s really cool that students are part of the conversations that are both good/bad/ugly etc. It’s not just good. It’s not just one-on-one conversations. They hear it all.”

“For me as I get older in this career and in this important. Collegiality is the number one factor that I’m looking for when we bring in faculty members and maybe postdocs and grad student re these people someone I want to work with. Spend much of my life hanging round. Life is way too short”





## Recommendations and Future Directions

Don't try to "be" this team

Everyday interactions impact team processes for scientists at all levels (undergraduate, pre/postdoc, senior scientists)

Include graduate and undergraduate students

# Questions?

*Hannah Love*

*CSU Science of Team Science*

*[Hannah.love@colostate.edu](mailto:Hannah.love@colostate.edu)*

*Jeni Cross*

*[Jeni.cross@colostate.edu](mailto:Jeni.cross@colostate.edu)*

*Ellen Fisher*

*[Ellen.fisher@colostate.edu](mailto:Ellen.fisher@colostate.edu)*

# Thank you

*The research reported in this publication was supported by Colorado State University's Office of the Vice President for Research Catalyst for Innovative Partnerships Program. The content is solely the responsibility of the authors and does not necessarily represent the official views of the Office of the Vice President for Research.*

Supported by NIH/NCATS Colorado CTSA Grant Number UL1 TR002535.  
Contents are the authors' sole responsibility and do not necessarily represent official NIH views.



# SciTS Research Team



Jeni Cross  
Associate Professor  
Sociology



Ellen Fisher  
AVP Strategic  
Initiatives  
Office of VPR



Hannah Love  
Graduate Research  
Assistant  
Sociology



Meghan Suter  
OVPR



Dinaida Egan  
OVPR



Bailey Fosdick  
Assistant Professor  
Statistics